



## SEMESTRIAL ON-LINE COURSE

# DUEF 2022-23

Diplôme Universitaire d'Etudes Françaises - Levels A1, A2, B1, B2, C1, C2  
On-line teaching

## PRESENTATION

TEACHING OF WRITING SKILLS (WRITTEN COMPREHENSION AND PRODUCTION), ORAL SKILLS (ORAL COMPREHENSION AND PRODUCTION). MORE SPECIFIC CLASSES ARE ADDED SUCH AS GRAMMAR AND PHONETIC.

200H OF CLASSES INCLUDING MORE THAN 50% IN VIDEO-CONFERENCE WITH TEACHERS SPECIALIZED IN FRENCH AS FOREIGN LANGUAGE.

TEACHING IS ALIGNED ON THE 6 LEVELS OF THE CADRE EUROPEEN COMMUN DE REFERENCE POUR LES LANGUES (CECRL).

TO DETERMINE YOUR LEVEL, A PLACEMENT TEST IS ORGANIZED (ONLY FOR PEOPLE WHO DON'T HAVE A DELF/DALF DEGREE OR A DEGREE FROM AN ADCUEFE CENTRE).

## AIMS

TO PREPARE FOR A ON-LINE DUEF (DIPLOME UNIVERSITAIRE D'ETUDES FRANÇAISES), FROM THE LEVEL A1 TO THE LEVEL C2. NEED TO HAVE A COMPUTER OR TABLET WITH GOOD INTERNET CONNECTION.

## PROGRAMME

FROM LEVEL B1, OPTIONAL CLASSES ARE OFFERED FOR MORE SPECIFIC PURPOSES (ECONOMIC AND SOCIAL FRENCH, SCIENTIFIC FRENCH...) OR CULTURAL FIELDS (LITERATURE, CULTURE AND HERITAGE...). YOU WILL HAVE TO CHOOSE 2 OPTIONAL CLASSES.



## PRACTICAL INFOS

**PUBLIC CONCERNED**  
FOREIGN STUDENTS

**REQUIREMENTS**  
• HOLD FOREIGN CITIZENSHIP  
• HAVE A SECONDARY SCHOOL OR AN UNIVERSITY DEGREE  
• NEED TO HAVE A COMPUTER OR TABLET WITH GOOD INTERNET CONNECTION

**TEACHING HOURS**  
200H PER SEMESTER INCLUDING MORE THAN 50% IN VIDEO-CONFERENCE

**FEES**  
1400€ PER SEMESTER

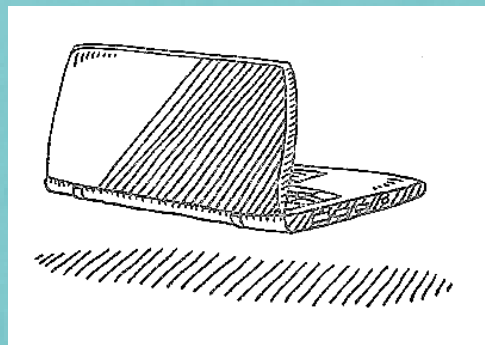


**IEFE**  
FRANÇAIS LANGUE  
ÉTRANGÈRE

**IEFE**  
**UNIVERSITÉ PAUL-VALÉRY**  
**MONTPELLIER 3**

BÂTIMENT EUGÈNE IONESCO  
ROUTE DE MENDE  
34199 MONTPELLIER CEDEX 5  
FRANCE

TÉL : +33 (0)4 67 14 21 01  
FAX : +33 (0)4 67 14 23 94  
@ : IEFE@UNIV-MONTP3.FR  
HTTP://IEFE.UNIV-MONTP3.FR



## TERMS OF END-OF-TERM EXAM

THE END-OF-TERM EXAM IS COMPOSED OF YOUR CONTINUOUS CONTROL (HOMEWORK AND EXAMS DURING THE SEMESTER) AND OF YOUR GRADES AT THE FINAL EXAMS. THE DATES OF THE EXAMS ARE SET. THERE IS NO RE-TAKE EXAM. ATTENDANCE IS MANDATORY TO OBTAIN THE DEGREE. THE STUDENT WHO ACQUIRES HIS DEGREE OBTAINS A UNIVERSITY DEGREE, THE «DIPLOME UNIVERSITAIRE D'ETUDES FRANÇAISES» (DUEF), ALIGNED ON THE 6 LEVELS OF THE CECRL.

## CALENDAR

	1st SEMESTER	2nd SEMESTER
PRE-REGISTRATION	Friday 15 July (postmark date)	Friday 9 December (postmark date)
REGISTRATION	From Tuesday 23 to Friday 26 August (Dates subject to change)	From Thursday 5 to Friday 13 January
PLACEMENT TEST	On-line (the dates will be communicated later)	On-line (the dates will be communicated later)
BEGINNING OF CLASSES	Thursday 1 September (You will be contacted directly by your teachers)	Thursday 19 January (You will be contacted directly by your teachers)
END OF CLASSES	Wednesday 7 December	Friday 5 May
EXAMS	From Monday 12 to Thursday 15 December	Between Tuesday 9 and Thursday 17 May (Dates subject to change)

## DUEF 2022-23

On-line teaching



### GOOD TO KNOW

THE IEFE IS **CENTER FOR EXAMS DELF-DALF**, FROM LEVEL B2 TO LEVEL C2.  
6 SESSIONS ARE AVAILABLE :  
NOVEMBER DECEMBER,  
MARCH, MAY, JUNE, AUGUST.



### GOOD TO KNOW

WITHIN THE FRAMEWORK OF EUROPEAN PARTNERSHIPS, THE DUEF IS EQUIVALENT TO 30 ECTS CREDITS PER TERM.

## TERMS AND CONDITIONS

HOLD FOREIGN CITIZENSHIP  
HAVE A SECONDARY SCHOOL OR A UNIVERSITY DEGREE  
NEED TO HAVE A COMPUTER OR TABLET WITH GOOD INTERNET CONNECTION

## PAYMENT METHODS

CREDIT CARD (IN THE OFFICE ONLY)  
BANK CHECK IN EUROS TO THE ORDER : "AGENT COMPTABLE DE L'UPV"  
BANK TRANSFER : SEE THE INFORMATIONS BELOW

CASH IS NOT ALLOWED.

CODE BANQUE	CODE GUICHET	N° DE COMPTE	CLÉ RIB	DOMICILIATION
10071	34000	000001003387	27	TPMONTPELLIER
IBAN (International Bank Account Number)				
FR76 1007 1340 0000 0010 0338 727 TRPUFRP1				

# REGISTRATION

EMPLOYEE &  
JOB SEEKER

**SPECIFIC RATE** : QUOTE REQUESTS FROM THE SERVICE UNIVERSITAIRE FORMATION CONTINUE OF THE UNIVERSITY AUL-VALÉRY THROUGH YOUR PÔLE EMPLOI ADVIZER OR YOUR SOCIAL WORKER  
CONTACT :  
@ : IEFE.FC@UNIV-MONTP3.FR  
PHONE : 04 67 14 55 64

## 1

### PRE-REGISTRATION

You will have to send the following documents on the link indicated on our website (<https://iefe.www.univ-montp3.fr/fr/registration>) during the period stated in the calendar :

- the pre-registration form filled
- the copy of your secondary school degree or university degree
- the certified translation in French of that degree
- the copy of the DELF/DALF degree, if you have one
- the copy of the 1st page of your passport
- a pre-payment on the registration fees of 150€\* for each session (non refundable)

Once your file and pre-payment are received, we will send you an authorization of registration by e-mail within 1 week.  
This document allows non-Europeans to ask for a student visa to the French embassy of their country.

\* cost non-refundable. This pre-payment can be used to pay for another course during the same academic year (from September to July).



## 2

### REGISTRATION

You will receive an e-mail with the dates of registration and telling you how to register.

In order to finalise your registration, you will have to send to us the following documents :

- the complete file
- your attestation of CVEC (Contribution Vie Étudiante et Campus)
- the payment of the registration fees :
  - 1250€ per semester if you are already pre-registered
  - 1400€ per semester if you haven't pre-registered

We will give you then an on-line appointment to pass a placement test (except if you have a DELF-DALF degree, or a university degree from a centre of the Association Campus FLE-ADCUEFE ).

**NO ADMINISTRATIVE REGISTRATION CAN BE MADE IF THE FILE IS INCOMPLETE.**

