



SEMESTRIAL ON-LINE COURSE

DUEF 2023-24

Diplôme Universitaire d'Etudes Françaises - Levels A1, A2, B1, B2, C1
On-line teaching

IEFE
FRANÇAIS LANGUE
ÉTRANGÈRE

PRESENTATION

- LESSONS ON THE ACQUISITION OF WRITTEN SKILLS (WRITTEN COMPREHENSION AND PRODUCTION) AND ORAL SKILLS (ORAL COMPREHENSION AND PRODUCTION), PLUS MORE SPECIFIC LESSONS ON GRAMMAR AND PHONETICS.
- 200 HOURS OF LESSONS, MORE THAN 50% OF WHICH ARE FACE-TO-FACE WITH TEACHERS SPECIALISED IN FRENCH AS A FOREIGN LANGUAGE FROM THE IEFE.
- CLASSES WILL BE HELD IN THE MORNING AND/OR AFTERNOON, DEPENDING ON THE TIME ZONE.
- THE COURSES ARE ALIGNED WITH THE 6 LEVELS OF THE COMMON EUROPEAN FRAMEWORK OF REFERENCE FOR LANGUAGES (CEFR).
- TO DETERMINE YOUR LEVEL, A PLACEMENT TEST IS ORGANISED (ONLY FOR PEOPLE WHO DO NOT HOLD A DELF OR DALF DIPLOMA OR AN ADCUEFE CENTRE).
- FROM LEVEL B1 ONWARDS, OPTIONAL COURSES ARE OFFERED TO ACQUIRE EITHER DISCIPLINARY KNOWLEDGE (FRENCH FOR ECONOMIC AND SOCIAL LIFE, FRENCH FOR TOURISM, FRENCH FOR SCIENCE, ETC.) OR CULTURAL SKILLS (FRENCH LITERATURE, FRENCH LANGUAGE LITERATURE). THE TWO OPTIONAL COURSES ARE COMPULSORY.

AIMS

- ACQUISITION AND DEVELOPMENT OF SKILLS IN FRENCH AS A FOREIGN LANGUAGE (FROM LEVEL A1 TO C1), IN WRITTEN COMPREHENSION AND PRODUCTION, ORAL COMPREHENSION AND PRODUCTION AND FRENCH AND FRANCOPHONE CULTURE IN AN ACTION-ORIENTED AND INTERCULTURAL PERSPECTIVE IN ORDER TO PREPARE FOR A DUEF (UNIVERSITY DIPLOMA IN FRENCH STUDIES).



PRACTICAL INFOS

PUBLIC CONCERNED
FOREIGN STUDENTS

REQUIREMENTS
• HOLD FOREIGN CITIZENSHIP
• HAVE A SECONDARY SCHOOL OR AN UNIVERSITY DEGREE
• NEED TO HAVE A COMPUTER OR TABLET WITH GOOD INTERNET CONNECTION

TEACHING HOURS
200H PER SEMESTER INCLUDING MORE THAN 50% IN VIDEO-CONFERENCE
13 WEEKS OF CLASSES AND 1 WEEK OF EXAMS

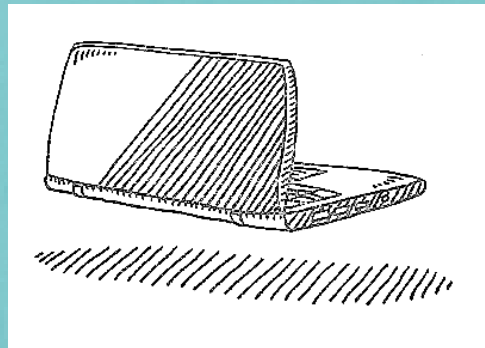
FEES
1400€ PER SEMESTER



IEFE
UNIVERSITÉ PAUL-VALÉRY
MONTPELLIER 3

BÂTIMENT EUGÈNE IONESCO
ROUTE DE MENDE
34199 MONTPELLIER CEDEX 5
FRANCE

TÉL : +33 (0)4 67 14 21 01
@ : IEFE@UNIV-MONTP3.FR
HTTP://IEFE.UNIV-MONTP3.FR



DUEF 2023-24

On-line teaching



GOOD TO KNOW
THE IEFE IS CENTER FOR EXAMS DELF-DALF, FROM LEVEL B2 TO LEVEL C2.
6 SESSIONS ARE AVAILABLE : NOVEMBER DECEMBER, MARCH, MAY, JUNE, AUGUST.

METHODOLOGY AND TERMS OF END-OF-TERM EXAM

- THE TEACHING IS BASED (DEPENDING ON THE LEVEL) ON AUTHENTIC ORAL AND WRITTEN DIDACTIC DOCUMENTS (COMMUNICATIVE AND ACTION-ORIENTED APPROACH).
- THE END-OF-TERM EXAM IS COMPOSED OF YOUR CONTINUOUS CONTROL (HOMEWORK AND EXAMS DURING THE SEMESTER) AND OF YOUR GRADES AT THE FINAL EXAMS. THE DATES OF THE EXAMS ARE SET. THERE IS NO RE-TAKE EXAM.
- ATTENDANCE IS MANDATORY TO OBTAIN THE DEGREE. THE STUDENT WHO ACQUIRES HIS DEGREE OBTAINS A UNIVERSITY DEGREE, THE «DIPLOME UNIVERSITAIRE D'ETUDES FRANÇAISES» (DUEF), ALIGNED WITH THE 6 LEVELS OF THE CECRL.

CALENDAR

	1st SEMESTER	2nd SEMESTER
PRE-REGISTRATION	Wednesday 12 July 2023 (postmark date)	Wednesday 13 December 2023 (postmark date)
REGISTRATION	From Wednesday 23 August to Friday 1 September 2023	From Wednesday 10 to Friday 19 January 2024
PLACEMENT TEST	On-line (the dates will be communicated later)	On-line (the dates will be communicated later)
BEGINNING OF CLASSES	Thursday 7 September 2023 (You will be contacted directly by your teachers)	Thursday 25 January 2024 (You will be contacted directly by your teachers)
END OF CLASSES	Friday 15 December 2023	Friday 10 May 2024
EXAMS	From Monday 18 to Thursday 21 December 2023	From Monday 13 to Thursday 16 May 2024
HOLIDAYS AND BANK HOLIDAYS	From Monday , October 30 to Sunday , November 5 2023	From Monday 19 to Sunday 25 February, 2024 From Monday 15 to Sunday 21 April 2024 Monday 1 April , Wednesday 1 May and 8 May 2024



GOOD TO KNOW
WITHIN THE FRAMEWORK OF EUROPEAN PARTNERSHIPS, THE DUEF IS EQUIVALENT TO 30 ECTS CREDITS PER TERM.

REGISTRATION

EMPLOYEE & JOB SEEKER

SPECIFIC RATE : QUOTE REQUESTS FROM THE SAFCO (SERVICE UNIVERSITAIRE FORMATION CONTINUE) OF THE UNIVERSITY AUL-VALERY THROUGH YOUR PÔLE EMPLOI ADVIZER OR YOUR SOCIAL WORKER
CONTACT :
@ : IEFE.FC@UNIV-MONTP3.FR
PHONE : 04 67 14 55 60

TERMS AND CONDITIONS

HOLD FOREIGN CITIZENSHIP
HAVE A SECONDARY SCHOOL OR A UNIVERSITY DEGREE
NEED TO HAVE A COMPUTER OR TABLET WITH GOOD INTERNET CONNECTION

PAYMENT METHODS

CREDIT CARD (IN THE OFFICE ONLY)

BANK CHECK IN EUROS TO THE ORDER : "AGENT COMPTABLE DE L'UPV"

BANK TRANSFER : CONTACT US BY MAIL TO OBTAIN OUR RIB

CASH IS NOT ALLOWED.



PRE-REGISTRATION

You will have to send the following documents on the link indicated on our website (<https://iefe.www.univ-montp3.fr/fr/registration>) during the period stated in the calendar :

- the pre-registration form filled
- the copy of your secondary school degree or university degree
- the certified translation in French of that degree
- the copy of the DELF/DALF degree, if you have one
- the copy of the 1st page of your passport
- a pre-payment on the registration fees of 150€* for each session (non refundable)

Once your file and pre-payment are received, we will send you an authorization of registration by e-mail within 1 week.

PLEASE NOTE: Pre-registration to the on-line course does not allow to apply for the renewal of the residence permit

* cost non-refundable. This pre-payment can be used to pay for another course during the same academic year (from September to July).



REGISTRATION

You will receive an e-mail with the dates of registration and telling you how to register.

You will have to send to us the following documents :

- the complete file
- your attestation of CVEC (Contribution Vie Étudiante et Campus)
- the payment of the registration fees :
1250€ per semester if you are already pre-registered
1400€ per semester if you haven't pre-registered

We will also give you the placement test to fill out (except if you have a DELF-DALF degree, or a university degree from a centre of the Association Campus FLE-ADCUEFE).

NO ADMINISTRATIVE REGISTRATION CAN BE MADE IF THE FILE IS INCOMPLETE.

