

SEMESTRIAL

ONLINE COURSE

DUEF E.A.D. 2024-25

Diplôme Universitaire d'Études Françaises - Du niveau A1 à C1
ONLINE TEACHING

IEFE
FRANÇAIS LANGUE
ÉTRANGÈRE

PRESENTATION

- LESSONS ON THE ACQUISITION OF WRITTEN SKILLS (WRITTEN COMPREHENSION AND PRODUCTION) AND ORAL SKILLS (ORAL COMPREHENSION AND PRODUCTION), PLUS MORE SPECIFIC LESSONS ON GRAMMAR AND PHONETICS.
- 200 HOURS OF LESSONS, MORE THAN 50% OF WHICH ARE FACE-TO-FACE WITH TEACHERS SPECIALISED IN FRENCH AS A FOREIGN LANGUAGE FROM THE IEFE.
- CLASSES WILL BE HELD IN THE MORNING AND/OR AFTERNOON, DEPENDING ON THE TIME ZONE.
- THE COURSES ARE ALIGNED WITH THE 6 LEVELS OF THE COMMON EUROPEAN FRAMEWORK OF REFERENCE FOR LANGUAGES (CEFR).
- TO DETERMINE YOUR LEVEL, A PLACEMENT TEST IS ORGANISED (ONLY FOR PEOPLE WHO DO NOT HOLD A DELF OR DALF DIPLOMA OR AN ADCUEFE CENTRE).
- FROM LEVEL B1 ONWARDS, OPTIONAL COURSES ARE OFFERED TO ACQUIRE EITHER DISCIPLINARY KNOWLEDGE (FRENCH FOR ECONOMIC AND SOCIAL LIFE, FRENCH FOR TOURISM, FRENCH FOR SCIENCE, ETC.) OR CULTURAL SKILLS (FRENCH LITERATURE, FRENCH LANGUAGE LITERATURE). THE TWO OPTIONAL COURSES ARE COMPULSORY.

AIMS

ACQUISITION AND DEVELOPMENT OF SKILLS IN FRENCH AS A FOREIGN LANGUAGE (FROM LEVEL A1 TO C1), IN WRITTEN COMPREHENSION AND PRODUCTION, ORAL COMPREHENSION AND PRODUCTION AND FRENCH AND FRANCOPHONE CULTURE IN AN ACTION-ORIENTED AND INTERCULTURAL PERSPECTIVE IN ORDER TO PREPARE FOR A DUEF (UNIVERSITY DIPLOMA IN FRENCH STUDIES).



PRACTICAL INFOS

PUBLIC CONCERNED
FOREIGN STUDENTS

REQUIREMENTS

- HOLD FOREIGN CITIZENSHIP
- HAVE A SECONDARY SCHOOL OR AN UNIVERSITY DEGREE
- NEED TO HAVE A COMPUTER OR TABLET WITH GOOD INTERNET CONNECTION

TEACHING HOURS

- 200H PER SEMESTER INCLUDING MORE THAN 50% IN VIDEO-CONFERENCE
- 13 WEEKS OF CLASSES AND 1 WEEK OF EXAMS

FEES

1400€ PER SEMESTER



IEFE
UNIVERSITÉ PAUL-VALÉRY
MONTPELLIER 3

BÂTIMENT EUGÈNE IONESCO
ROUTE DE MENDE
34199 MONTPELLIER CEDEX 5
FRANCE

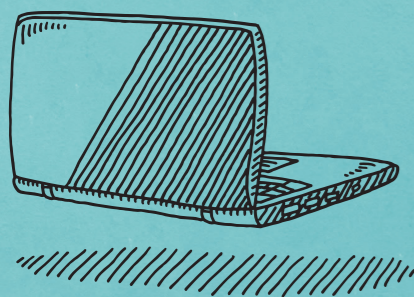
TÉL : +33 (0)4 67 14 21 01

@ : IEFE@UNIV-MONTP3.FR

[HTTPS://IEFE.UNIV-MONTP3.FR](https://iefe.univ-montp3.fr)



DUEF E.A.D. ONLINE TEACHING 2024-25



GOOD TO KNOW

THE IEFE IS **CENTER FOR EXAMS DELF-DALF**, FROM LEVEL B2 TO LEVEL C2.

6 SESSIONS ARE AVAILABLE :
NOVEMBER, DECEMBER, MARCH, MAY,
JUNE AND AUGUST.

METHODOLOGY AND TERMS OF END-OF-TERM EXAM

■ THE TEACHING IS BASED (DEPENDING ON THE LEVEL) ON AUTHENTIC ORAL AND WRITTEN DIDACTIC DOCUMENTS (COMMUNICATIVE AND ACTION-ORIENTED APPROACH).

■ THE END-OF-TERM EXAM IS COMPOSED OF YOUR CONTINUOUS CONTROL (HOMEWORK AND EXAMS DURING THE SEMESTER) AND OF YOUR GRADES AT THE FINAL EXAMS. THE DATES OF THE EXAMS ARE SET. THERE IS NO RE-TAKE EXAM.

■ ATTENDANCE IS MANDATORY TO OBTAIN THE DEGREE. THE STUDENT WHO ACQUIRES HIS DEGREE OBTAINS A UNIVERSITY DEGREE, THE «DIPLÔME UNIVERSITAIRE D'ETUDES FRANÇAISES» (DUEF), ALIGNED ON THE 6 LEVELS OF THE CECL.

CALENDAR

	SEMESTRE 1	SEMESTRE 2
DEADLINE FOR PRE-REGISTRATION	Friday 12 July 2024 (postmark date)	Wednesday 11 December 2024 (postmark date)
REGISTRATION	From Monday 26 August to Tuesday 2 September 2024	From Tuesday 7 to Tuesday 14 January 2025
PLACEMENT TEST	From Wednesday 28 to Friday 30 August 2024	From Wednesday 15 to Friday 17 January 2025
BEGINNING OF CLASSES	Friday 6 September 2024	Friday 24 January 2025
END OF CLASSES	Friday 13 December 2024	Friday 9 May 2025
EXAMS	From Monday 16 to Friday 20 December 2024	From Monday 12 to Friday 16 May 2025
HOLIDAYS AND BANK HOLIDAYS *	From Monday 28 October to Sunday 2 November 2024 Bank holiday : Monday 11 November 2024	From Monday 24 February to Sunday 2 March 2025 From Tuesday 22 to Sunday 27 April 2025 Bank holidays : Monday 21 April, Thursday 1, 8 and 29 May, Monday 9 June 2025



GOOD TO KNOW

WITHIN THE FRAMEWORK OF EUROPEAN PARTNERSHIPS, THE DUEF IS EQUIVALENT TO 30 ECTS CREDITS PER TERM.

INSCRIPTION

EMPLOYEE & JOB SEEKER

SPECIFIC RATE:

QUOTE REQUESTS FROM THE SAFCO (SERVICE UNIVERSITAIRE FORMATION CONTINUE) OF THE UNIVERSITY PAUL-VALÉRY THROUGH YOUR PÔLE EMPLOI ADVISER OR YOUR SOCIAL WORKER

CONTACT :

@ : IEFE.FC@UNIV-MONTP3.FR
PHONE : 04 67 14 55 60

TERMS AND CONDITIONS

- HOLD FOREIGN CITIZENSHIP
- HAVE A SECONDARY SCHOOL OR A UNIVERSITY DEGREE
- NEED TO HAVE A COMPUTER OR TABLET WITH GOOD INTERNET CONNECTION

PAYMENT METHODS

- CREDIT CARD (IN THE OFFICE ONLY)
- BANK CHECK IN EUROS TO THE ORDER: "AGENT COMPTABLE DE L'UPV"
- BANK TRANSFER: CONTACT US BY MAIL TO OBTAIN OUR RIB
- CASH IS NOT ALLOWED.



PRE-REGISTRATION

You will have to send the following documents on the link indicated on our website (<https://iefe.www.univ-montp3.fr/fr/registration>) during the period stated in the calendar:

- the pre-registration form filled
- the copy of your secondary school degree or university degree
- the certified translation in French of that degree
- the copy of the DELF/DALF degree, if you have one
- the copy of the 1st page of your passport
- a pre-payment on the registration fees of 150€* for each session (non refundable)

Once your file and pre-payment are received, we will send you an authorization of registration by e-mail within 1 week.

PLEASE NOTE: Pre-registration to the online course does not allow to apply for the renewal of the residence permit

* cost non-refundable. This pre-payment can be used to pay for another course during the same academic year (from September to July).



REGISTRATION

You will receive an e-mail with the dates of registration and telling you how to register.

You will have to send to us the following documents:

- the complete file
- your attestation of CVEC (Contribution Vie Étudiante et Campus)
- the payment of the registration fees :
 - » 1250€ per semester if you are already pre-registered
 - » 1400€ per semester if you haven't pre-registered

We will also give you the placement test to fill out (except if you have a DELF-DALF degree, or a university degree from a centre of the Association Campus FLE-ADCUEFE).

NO ADMINISTRATIVE REGISTRATION CAN BE MADE IF THE FILE IS INCOMPLETE.

